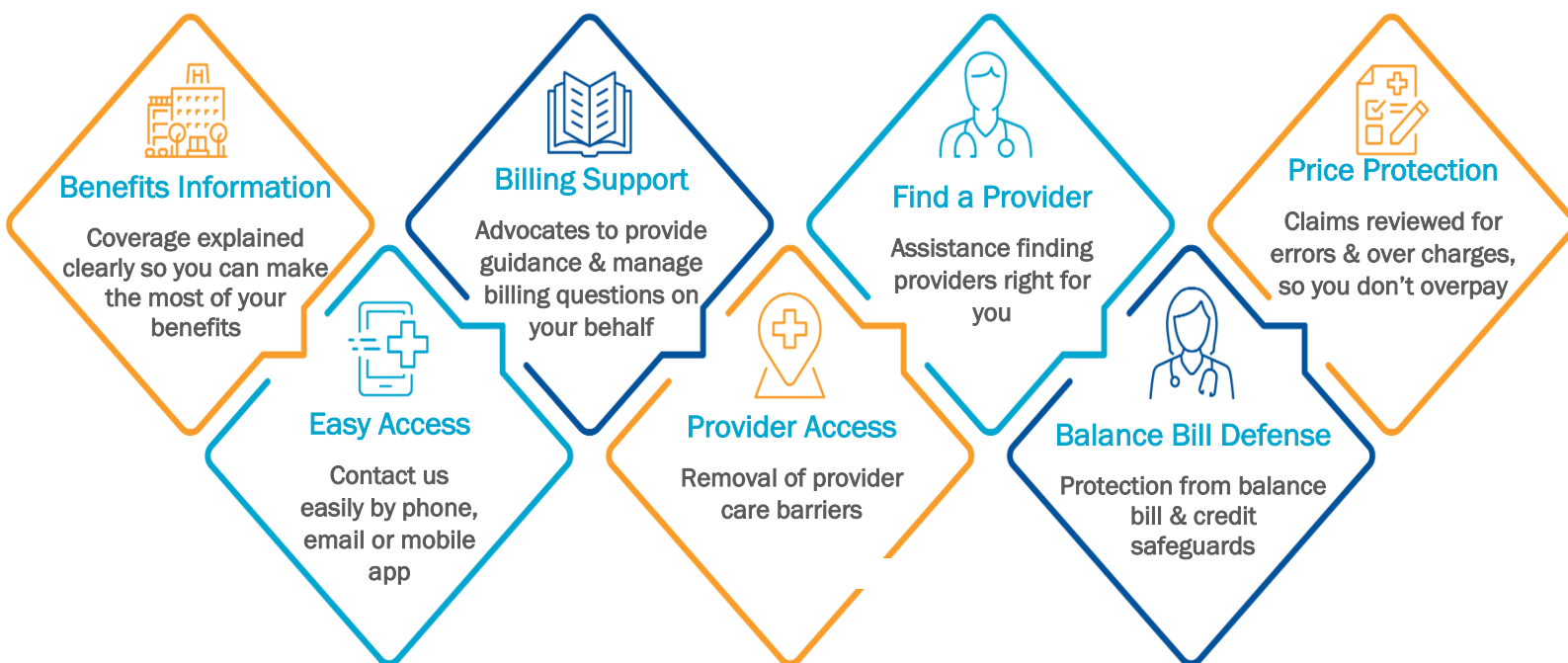


Welcome to Your Health Plan

We're here for you with expert service & support.



Your Benefits ID Card

- All the plan information you and your provider need.
- Take your card to every appointment.
- Prime PPO Network for physicians and professional providers.
- No network for facilities, access facility of your choice.
- Ask your provider to call the number on the card if they have claims or coverage questions-we'll do the rest.
- Call the member number on your card for benefits or billing questions.



Need Help? Contact us at the number on your Benefits ID card!